



ATMOS iDocuments GYN

Documentation software for dysplasia screenings

Exactly
what
I need

ATMOS Gynecology

One-for-all solution for gynecology.

ATMOS MedizinTechnik is proud to present ATMOS iDocuments GYN — innovative documentation software that allows gynecologists to carry out and document dysplasia screenings more quickly. The software can be easily integrated into existing IT environments.

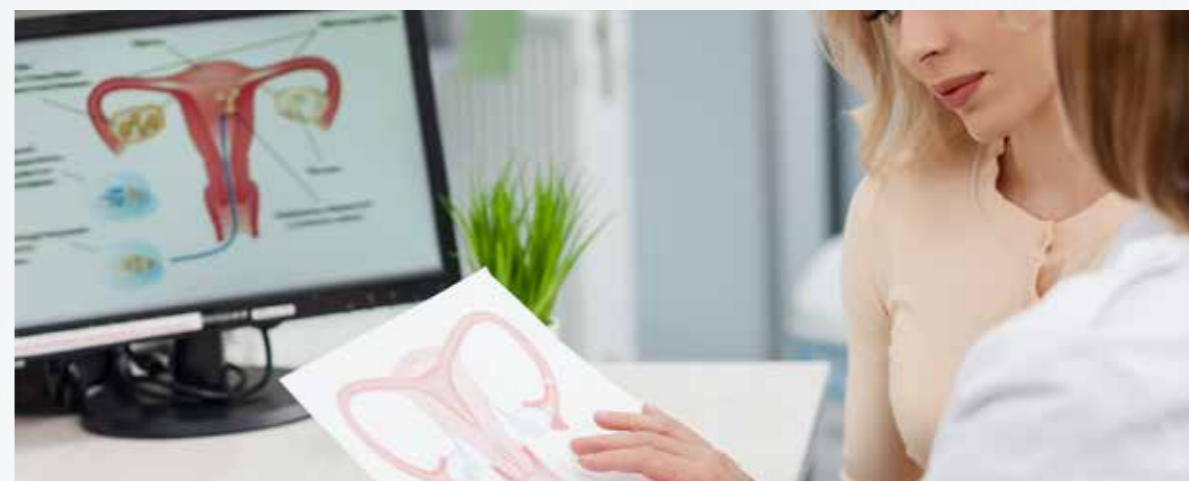


DEVELOPED FOR GYNECOLOGISTS

ATMOS iDocuments GYN was developed in close cooperation with leading experts and has several special technical features that makes it possible to perform time-consuming examination and documentation steps much more quickly and conveniently.

colposcopy report template based on IFCPC nomenclature: within the software, the individual fields can be activated or deactivated simply by clicking on them, or additional notes can be added to individual images using the comment function. All this not only makes examining and documenting more convenient for gynecologists, but also results in significant time savings — for every dysplasia screening.

With the new ATMOS software, patient master data can be imported easily and quickly from the local information system. The image editing function can be used to add graphic markers or text to the individual images. For faster reporting, ATMOS iDocuments GYN offers a completely digitized



VALUED BY IT SPECIALISTS

A closed and manufacturer-independent system that requires no local installations on end devices and can be easily connected to the existing practice/hospital system via integrated DICOM or GDT interfaces:

This makes ATMOS iDocuments GYN the optimal solution for IT teams seeking documentation software for gynecological practices and hospitals that is easy to install, use, and maintain.



Quick, reliable documentation

ATMOS iDocuments GYN

For optimal workflow during dysplasia screenings.

From installation to examination to documentation: ATMOS iDocuments GYN is impressive in every phase and with its web-based concept as well as its sophisticated features, it contributes noticeably to workflow optimization during gynecological examinations.

Significant time savings

THROUGH OPTIMIZED DOCUMENTATION PROCESSES

- Automatic structuring of imported patient data according to the current stage of the examination
- Flexible image recording with the colposcope
- Quick image preview in the software
- Digital image editing by adding graphic markers or text comments

Maximum process reliability

THANKS TO SYSTEM-GUIDED DOCUMENTATION

- Clear structure, intuitive operating concept, and standardized processes
- Efficient image reporting via drag-and-drop integration of text templates
- Various text templates available (IFCPC-compliant or user-defined)
- Time-saving creation of reports using a digital colposcopy report template

Easy integration

THANKS TO OUT-OF-THE-BOX INSTALLATION

- Easy integration into existing practice or hospital networks
- Web-based concept, no installation of clients on end devices required
- Secure data import and export via DICOM or GDT interface
- Available in various language versions

iDocuments GYN



ATMOS iDocuments GYN — Documentation

Documentation process? Optimized.

Everything in the right place at the right time: To ensure that doctors can devote their fullest attention to the patient during the examination, ATMOS iDocuments GYN provides them with ideal support in every examination phase.

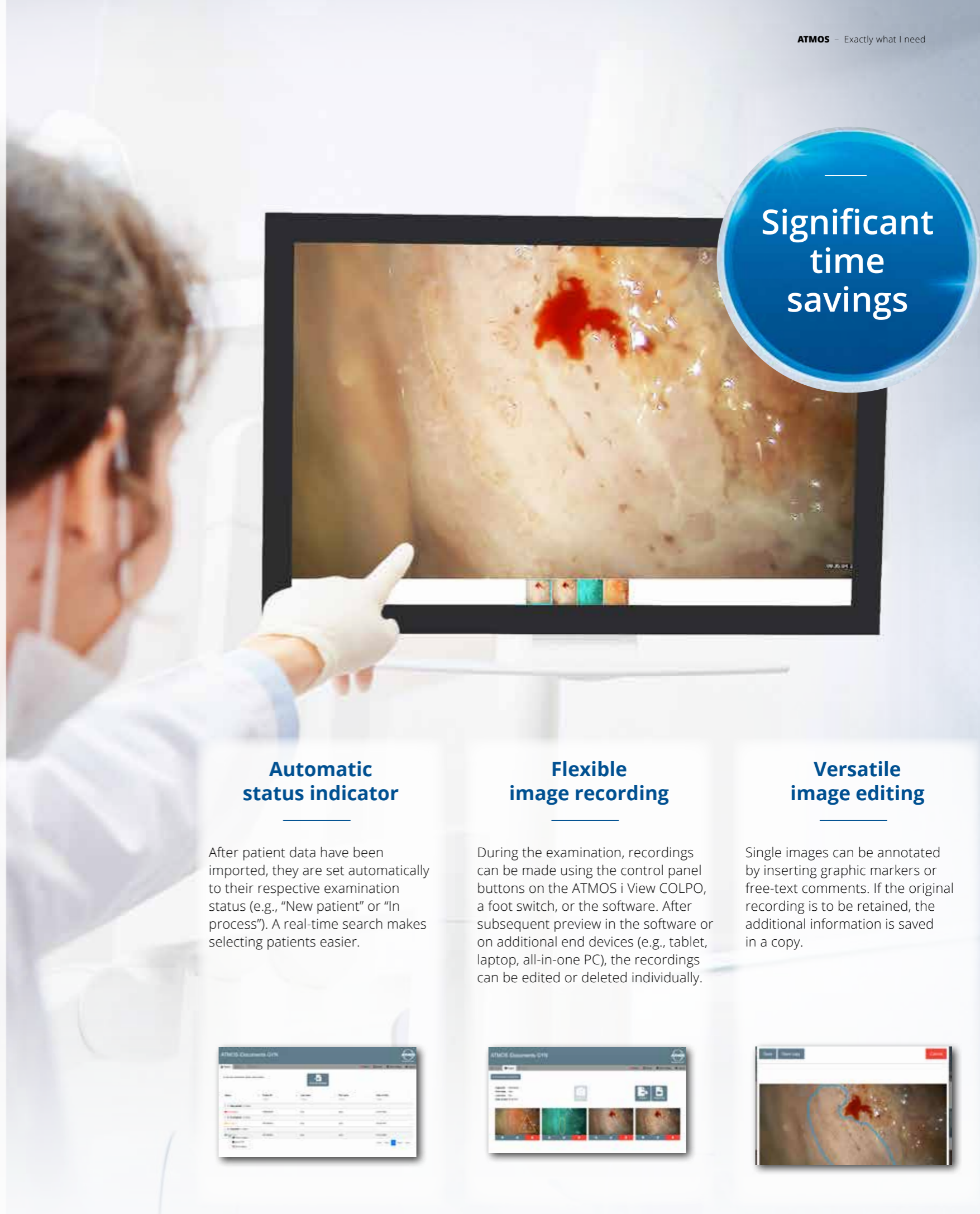
OPTIMIZED WORKFLOW

Many little things influence the course of a dysplasia screening. But a dysplasia screening is anything but a small matter. For this reason, ATMOS iDocuments GYN has bundled all topics relevant to examinations and documentation on a single platform and has established a workflow that guides doctors efficiently, thus noticeably reducing the workload.

For example, the imported patient data are automatically structured during the examination, and the patient is assigned a clear status in the software depending on the stage of the examination. The doctor can see all the relevant information at a glance and initiate the next steps without wasting any time. The new software by ATMOS also offers support with documentation. Graphic editing can be done quickly and easily, and free-text comments can be added to the images to provide further information.



Simple image recording via pressure-sensitive control panel buttons on the ATMOS i View COLPO



Significant time savings

Automatic status indicator

After patient data have been imported, they are set automatically to their respective examination status (e.g., "New patient" or "In process"). A real-time search makes selecting patients easier.



Flexible image recording

During the examination, recordings can be made using the control panel buttons on the ATMOS i View COLPO, a foot switch, or the software. After subsequent preview in the software or on additional end devices (e.g., tablet, laptop, all-in-one PC), the recordings can be edited or deleted individually.



Versatile image editing

Single images can be annotated by inserting graphic markers or free-text comments. If the original recording is to be retained, the additional information is saved in a copy.



ATMOS iDocuments GYN — Documentation

Diagnostic equipment? State-of-the-art.

Two products that complement each other perfectly: With ATMOS i View COLPO, ATMOS MedizinTechnik offers gynecologists a technically superior colposcope that sets new standards in terms of usability and image quality and, in combination with ATMOS iDocuments GYN, ensures optimal examination results.



INTEGRABLE COLPSCOPE

The ATMOS i View COLPO is designed for gynecological examinations, offering impressive light intensity, depth of field, and intuitive handling. Innovative LED technology ensures homogeneous illumination, natural color rendering, and low thermal stress on the mucosa. The high-performance optics deliver high-resolution and color-corrected 3D images.



LOCKABLE MOBILE FLOORSTAND

The ATMOS mobile floorstand makes it possible to secure the colposcope in a specific position during the examination or to transport it to another examination room if necessary. Equipped with sturdy rollers and its own brake, the mobile floorstand can be moved or locked easily and provides more flexibility for changing examination situations.

info



The new dimension of vision

Read the ATMOS i View COLPO brochure and discover the unique advantages the ATMOS colposcope has to offer for daily work routines in gynecological practices or hospitals.

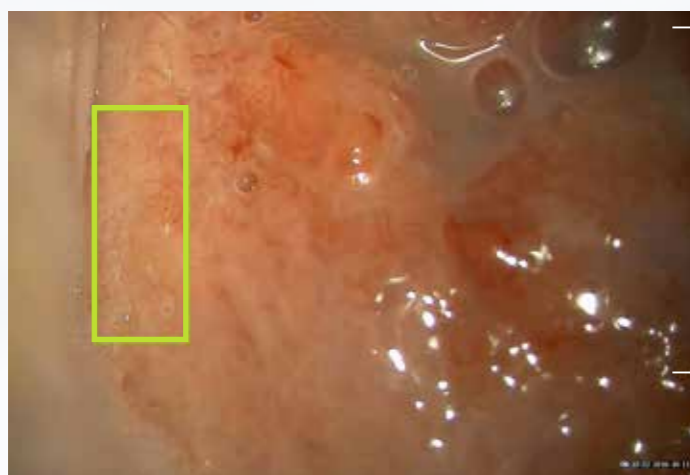


Scan the QR code and download the brochure

Ideal for the early detection of cervical cancer

Superb contrast. With the H.A.S.I. filter.

By combining patented LED technology that is gentle to tissues with the optical filter implemented by ATMOS, structures are displayed with significantly greater contrast and clarity. Use of the H.A.S.I. filter shows an average of 20 percent better contrasting of vascular changes than that of the conventional green filter.



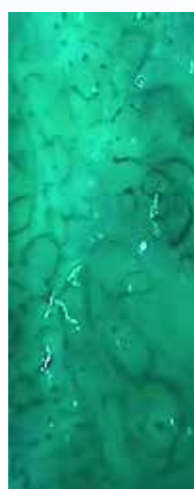
ROI – region of interest



ROI without filter



ROI green filter



ROI H.A.S.I. filter

H.A.S.I. filter method
“Hemoglobin Absorption Spectral Imaging” for unsurpassed contrast enhancement of vessels on the mucosa

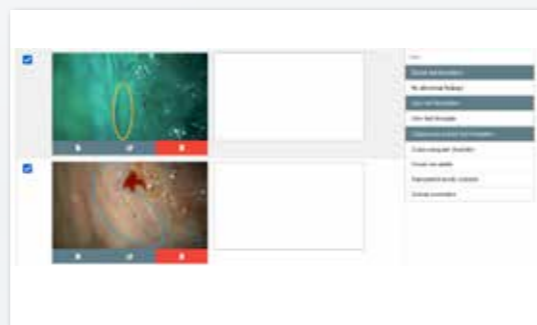


Reporting? System-supported.

Step by step to an optimal report: In order for gynecological examinations to be documented comprehensively and quickly, the ATMOS iDocuments GYN software relies on standardized processes, ready-made text templates, and intuitive operation.

CLEAR LAYOUT

Patient data, images, text templates: all the information required for reporting can be found on one interface in the new ATMOS iDocuments GYN. The doctor does not have to gather information from other systems, but instead can begin with the reporting process right after finishing the examination — even while the patient is still getting dressed.



INTUITIVE OPERATION

To ensure that nothing is overlooked when creating reports, the software guides gynecologists safely and efficiently through the documentation process via buttons that are easy to recognize and understand. Learning success comes quickly, so even when creating the second report, the doctor already knows exactly which steps must still be taken and what support and options the software offers him or her.

SIMPLE REPORTING

In addition to the option of commenting on images with free text, doctors can also use the new ATMOS documentation software to assign ready-made text templates to an image — simply by dragging and dropping. Two types of text templates are available for this purpose: standardized IFPCPC-compliant text templates composed of activated fields from the digitized colposcopy report template, as well as individually created text templates. The final diagnosis can be entered in the field provided.

FLEXIBLE EXPORT

The examination results can be exported with a simple click. The results are then exported as a PDF file either via the DICOM or GDT interface or via an external data carrier to the connected information system and archived there. The reports can also be individualized, for example, by inserting the address or the logo of the hospital or practice in the header. The images created during the examination can be exported as an attachment to the colposcopic findings and/or as their own separate files.

Colposcopy report template? Digitized.

Colposcopy report template: A highlight in the new ATMOS iDocuments GYN software is the completely digitized colposcopy report template. Where previously you had to print out, fill in, scan and archive, with ATMOS iDocuments GYN you just need a few clicks.

DIGITAL DOCUMENTATION OF FINDINGS

The colposcopy report template stored in ATMOS iDocuments GYN is based on the nomenclature for colposcopy adopted in Rio de Janeiro in 2011. This colposcopy report template contains everything gynecologists need to document colposcopic findings. To facilitate their work, ATMOS has completely digitized the colposcopy report template. The individual fields can be activated or deactivated simply by clicking on them. SCJ values or the percentage of the cervix can be entered quickly and easily in digital form with ATMOS iDocuments GYN.



Maximum
process
reliability

ATMOS iDocuments GYN — Installation

Installation? Out of the box.

Unpack, connect, get started: The ATMOS iDocuments GYN software was designed to be integrated quickly into the existing practice or hospital network and managed afterwards with little effort.

Easy
integration

THE IDEAL LINK IN GYNECOLOGICAL PRACTICES AND HOSPITALS



The ATMOS iDocuments GYN software is a closed stand-alone system and works on all PCs and tablets with a Windows, macOS, or Android operating system. It can be accessed and operated easily and conveniently via the browser interface. Certified according to IEC 60601-1 and IEC 60601-1-2 standards, the passively cooled hardware was designed for continuous operation and has galvanic isolation. Its simple and elegant housing has no recesses or holes and can easily be dusted off or disinfected.

**QUICK START-UP**

ATMOS iDocuments GYN can be set up and put into operation quickly by the IT team in charge at the practice or hospital. All they have to do is connect the interface integrated in ATMOS iDocuments GYN to the existing information system and to the respective gynecological workstations. The ATMOS Support Team will be happy to provide remote support when putting the system in commission. Local installation on end devices is not required. The web-based concept reduces the amount of cabling to a minimum.

STANDARDIZED INTERFACES

For secure data exchange with the existing information system, ATMOS iDocuments GYN has two standardized interfaces: DICOM and GDT. Via these interfaces, patient records for upcoming examinations can be uploaded to local workstations, or examination reports can be archived again in the information system after the examination has been completed.



ATMOS MedizinTechnik GmbH & Co. KG

Ludwig-Kegel-Str. 16
79853 Lenzkirch / Germany

Phone +49 7653 689-0
Fax +49 7653-689-190
E-mail info@atmosmed.com

www.atmosmed.com



Scan the QR code to go to the
ATMOS iDocuments GYN web
page.