

ATMOS LS 31 LED

We bring daylight into strobo-darkness

High-Power-Endoscopy

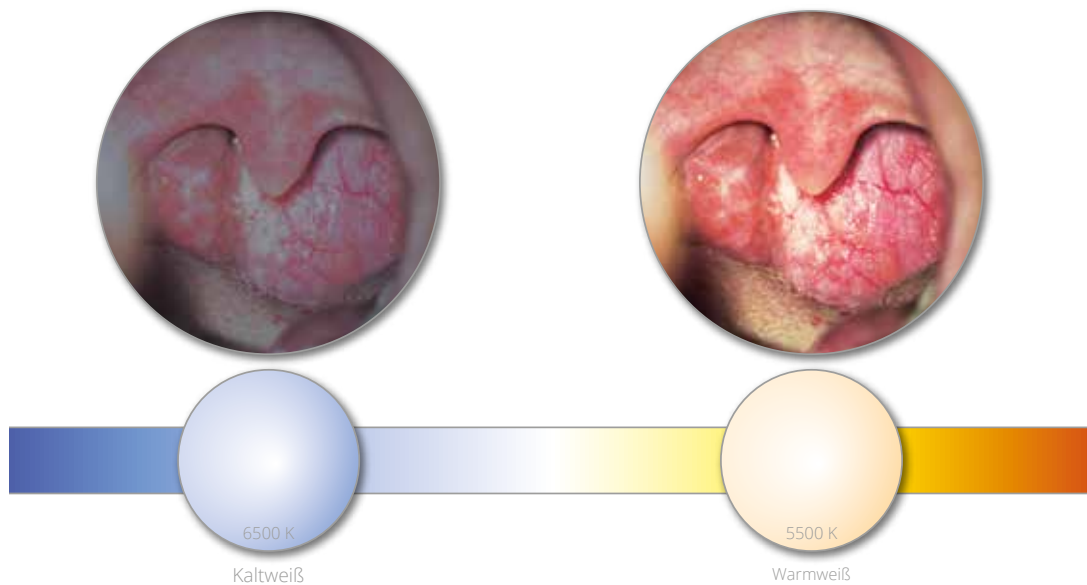


ATMOS LS 31 LED

High-power LEDs with daylight quality (5,500 K \pm 10%)!

With the ATMOS LS 31 LED, there is finally a powerful LED light source with 150 kLux available in stroboscopy. In combination with the ATMOS Strobe 21 LED, we bring light into the dark and create exceptional stroboscopy videos.

With the new unique feature of the variable colour temperature setting, you can balance colour shifts from heavily used endoscopes and fibre optic cables or adjust colour temperature ranging from 6500K to 5500K (daylight) to your individual needs.



The ATMOS LS 31 LED can be connected with the ATMOS Strobe 21 LED using a trigger cable. Another trigger cable also connects older devices of the ATMOS series and thus makes all the features of the new ATMOS LS 31 LED light source available to users as well, who have been working with a stroboscope ATMOS for years.



HIGH-POWER LEDS

PERFECTLY TUNED TO THE ATMOS STROBO 21 LED

HIGH LUMINOUS INTENSITY OF 150KLUX

COLOUR TEMPERATURE STEPLESSLY ADJUSTABLE

ALSO DESIGNED FOR CONTINUOUS USE AS AN ENDOSCOPY LED

FANLESS



No disturbing fan noise
Via passive cooling.

Infinitely variable colour temperature settings
Colour temperature ranging from
6500K to 5500K (daylight).

Flexible adaptor system
Suitable for all popular brands
(ATMOS/Storz, Wolf, Olympus, Pentax, ACMI).

ATMOS MedizinTechnik GmbH & Co. KG
Ludwig-Kegel-Str. 12, 14-16, 18
79853 Lenzkirch / Germany
Tel: +49 7653 689-370
atmos@atmosmed.de

www.atmosmed.com