

MEDAP 


MedizinTechnik

Reliable and quiet!

ATMOS Surgical Suction



Made in Black Forest

by ATMOS

SILENT

ATMOS Surgical Suction

Surgical suction units are used during and after operations to remove surgical fluids, tissue, gases and bodily fluids. During a surgical procedure, it is important to guarantee that fluids can be removed quickly and reliably at all times. This ensures that the doctor has an unobstructed view of the operating area, and that the patient's welfare is not endangered. Long operations that produce large volumes of fluids require a system that performs suction as quickly and quietly as possible. In addition to this, the perfect surgical suction unit must also be sturdy and durable, even under difficult conditions. Intuitive and simple operation is also a must, as is compliance with hygiene requirements.

ATMOS Surgical Suction units are used in a wide range of applications in hospitals, outpatient surgery centres and licensed medical practices:

- Surgical suction
- Liposuction
- Aesthetic surgery
- Midwifery
- Gastroenterology
- Endoscopy
- Ophthalmology
- Dermatology
- Heart, thorax and vascular surgery
- Neurosurgery



Simple, intuitive operation

- Integration made easy – disposable and reusable secretion canisters can be attached quickly with just a few simple steps
- Simple vacuum control with customisable vacuum settings
- Convenient operation – can be switched on and off by foot or by hand

Maximum reliability

- Fast vacuum build-up and high suction power keep the operation area unobstructed
- Continuous suction; functions remain available in any situation
- Runs quiet as a whisper, making work pleasant and allowing you to concentrate on the operation

Maximum hygiene convenience

- Maximum protection against infection and contamination
- Modular oversuction protection variants for greater flexibility
- Modern design reduces routine cleaning times
- All accessories that come into contact with secretions can be autoclaved at up to 134°C

Saves costs and time

- Specially designed for continuous operation
- Allows devices to be returned to use more quickly
- Zero-maintenance – no expensive maintenance required
- No training required – saves time during device commissioning



MEDAP TWISTA SP 1070

The TWISTA SP 1070 is an extra-powerful surgical suction unit that has been specially designed for continuous use during operations. It uses vacuum suction to quickly and quietly remove even high volumes of secretions, blood and serous liquids, including any particles they contain, and can keep running over prolonged periods.



Modular oversuction protection for maximum flexibility

Additional bacterial filter on air outlet

Two device rails for up to four secretion canisters

Modular oversuction protection

Depending on what oversuction protection is already provided in the secretion canister, the suction unit can be operated either without separate oversuction protection or with modular oversuction protection that is configured to suit the user's individual needs.



Additional bacterial filter

In addition to the oversuction protection, the TWISTA SP 1070 also comes equipped with a high-performance bacterial filter on the air outlet, which provides a second, highly effective level of protection against contamination.



Up to 4 secretion canisters

The two device rails on the front can hold up to four secretion canisters. A range of different designs can be installed and replaced quickly and safely.



TWISTA SP 1070 

Record 55 

S 351 OT 

BORA UP 2080 

C 451 / C 361 

VENTA SP 26 

Areas of application 

Indications 

Overview 

ATMOS Record 55

With its suction power and high maximum vacuum, the ATMOS Record 55 is the perfect choice for a wide variety of applications in the operating theatre – whenever extremely quiet suction removal over long periods of time is required for secretions, blood and serous liquids.

Wherever you need to keep a quiet, robust and powerful surgical suction unit at hand the ATMOS Record 55 is the perfect solution.



Simple and intuitive operation

Extremely quiet

User-friendly secretion canister management

Intuitive operation

Quick and intuitive operation makes the surgical suction unit easy to use. It offers the perfect working height and an individually adjustable vacuum, making it easy to use even in stressful situations.



Extremely quiet

It runs quiet as a whisper, making work pleasant and allowing you to concentrate on the operation – especially important during longer operations.



Easy to use

The intuitive operation and hygienic, user-friendly secretion canister management system make your day-to-day work easier. A range of different secretion canister systems can be installed and replaced quickly and safely.



TWISTA SP 1070



Record 55



S 351 OT



BORA UP 2080



C 451 / C 361



VENTA SP 26



Areas of application



Indications



Overview



ATMOS S 351 OT

It's a familiar situation: especially when performing critical operations, it is hugely important for the surgical team to be able to focus on their work and rely on the products in the operating theatre. All extraneous noise must be avoided so that the team can concentrate on what's important. Apart from this, sensitive tissues need to be handled extremely delicately. In such situations, it is essential that the team is able to control the vacuum. The ATMOS S 351 OT intelligent surgical suction unit offers a number of impressive features: an automatic standby mode, a guard to protect tissue and prevent it from sticking to the suction nozzle, an intermittent suction function and a range of safety options.

The surgical suction unit is available either trolley-mounted or as a desktop unit.



Automatic vacuum control

Low noise emissions

Automatic level sensing

Precise vacuum adjustment

Set the required vacuum quickly and easily in mbar, mmHg or kPa, at the push of a button. The device automatically switches the pump off when the target vacuum is reached, then maintains the vacuum level.



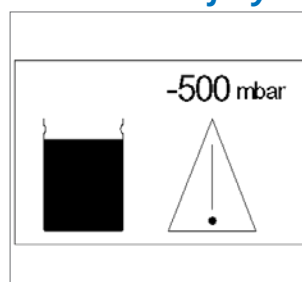
Almost completely noiseless

In automatic standby mode, the ATMOS S 351 OT checks whether the vacuum can be built up again every 5 seconds. Suction begins automatically when liquid is sucked into the unit.



Greater safety

Automatic warnings enable the user to react quickly to potentially critical situations.



TWISTA SP 1070



Record 55



S 351 OT



BORA UP 2080



C 451 / C 361



VENTA SP 26



Areas of application



Indications



Overview



MEDAP BORA UP 2080

The BORA UP 2080 is an all-round specialist for clinics and licensed medical practices. It is equipped to deal with a wide variety of requirements in the operating theatre and the intensive care unit. The handy, compact universal suction unit evacuates large volumes of blood and serous liquids quickly and reliably. The versatile BORA UP 2080 can be trolley-mounted, attached to the platform of a ceiling-mounted supply unit, or fitted onto a device rail.



Suitable for universal use

Simple and intuitive operation

Additional bacterial filter on air outlet

Versatile

A large handle makes the unit easy to transport. Two built-in supports make mounting on device rails quick and easy.



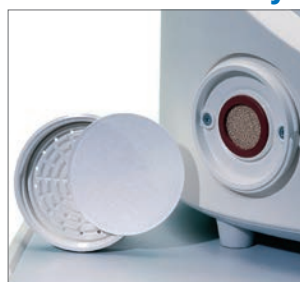
Easy operation

The unit is easy to handle thanks to its individually adjustable vacuum, clearly legible vacuum gauge with large display, and the perfect working height for the user.



Additional bacterial filter

In addition to its oversuction protection, the BORA UP 2080 also comes equipped with a high-performance bacterial filter at the air outlet, which provides a second, highly effective level of protection against contamination.



TWISTA SP 1070



Record 55



S 351 OT



BORA UP 2080



C 451 / C 361



VENTA SP 26



Areas of application



Indications



Overview



ATMOS C 451 / C 361

One of the most important requirements when removing blood and other fluids using suction is a device that can offer high suction power from the moment it is switched on. Its extremely powerful pump makes the ATMOS C 451 a highly versatile surgical suction unit, especially for suction applications in the operating theatre, surgical intensive care and the general ward, emergency treatment cases, OMS surgery, and doctors' and dentists' practices. When it comes to suction applications that require less power, the ATMOS C 361 is the perfect choice.

The handy, compact surgical suction units are available either trolley-mounted or as desktop units. Their compact design makes cleaning much easier.



Suitable for universal use

Simple and intuitive operation

Practical secretion canister management system

The surgical suction unit can be carried easily from room to room, or pushed on a trolley.

Versatile



The unit is easy to handle thanks to its individually adjustable vacuum, clearly legible vacuum gauge, and the perfect working height for the user.

Intuitive operation



A suitable secretion canister system is available for every application. The versatile devices can be equipped with one reusable canister system or a number of different disposable canister systems.

Easy to use



TWISTA SP 1070



Record 55



S 351 OT



BORA UP 2080



C 451 / C 361



VENTA SP 26



Areas of application



Indications



Overview



MEDAP VENTA SP 26

The VENTA SP 26 is an extremely quiet and compact suction unit that is perfect for applications that produce a low volume of fluid. Thanks to its lightweight design and suitability for continuous operation, it is ideal for use in clinics (e.g. for endoscopy) and specialist practices, as well as the military medical service.

The VENTA SP 26 is available as both a mains and a battery-operated model, so that more minor procedures can also be carried out without a connection to the mains.



Saves time thanks to revolutionary vacuum adjustment

100% oversuction protection

Suitable for universal use

Vacuum adjustment

The vacuum is adjusted using a ring-shaped vacuum regulator fitted around the 63 mm vacuum gauge. This can be adjusted with one finger for high-precision settings. The target vacuum is shown on the handle recess.



Oversuction protection

Thanks to a special mechanism, the VENTA SP 26 can only be operated with a hydrophobic bacterial and viral filter attached to it. This prevents errors in use and high repair costs.



Versatile

The VENTA SP 26 can be mounted either on a trolley or, thanks to its special universal mounting system, on device rails or vertical rods, such as those on an infusion stand.



TWISTA SP 1070



Record 55



S 351 OT



BORA UP 2080



C 451 / C 361



VENTA SP 26



Areas of application



Indications



Overview



Areas of application

| | TWISTA SP 1070 | ATMOS Record 55 | ATMOS S 351 OT |
|--------------------------------|----------------|-----------------|----------------|
| Operations/surgery | ✓ | ✓ | ✓ |
| Intensive care unit | ✗ | ✗ | ✗ |
| Inpatient ward | ✗ | ✗ | ✗ |
| In-hospital emergencies | ✗ | ✗ | ✗ |
| Outpatient surgery centre | ✓ | ✓ | ✓ |
| Doctors' practices | ○ | ○ | ○ |
| Dentist/orthodontist practices | ✓ | ✓ | ○ |
| OMS surgery | ✓ | ✓ | ○ |
| ENT practices | ✓ | ✓ | ○ |



| BORA UP 2080 (OP) | ATMOS C 451 | ATMOS C 361 | VENTA SP 26 N | VENTA SP 26 A |
|-------------------|-------------|-------------|---------------|---------------|
| ✓ | ✓ | ✓ | ✗ | ✗ |
| ○ | ○ | ○ | ✓ | ✓ |
| ○ | ○ | ○ | ✓ | ✓ |
| ✗ | ✗ | ✗ | ○ | ✓ |
| ✓ | ✓ | ✓ | ○ | ○ |
| ✓ | ✓ | ✓ | ✓ | ✓ |
| ✓ | ✓ | ○ | ✗ | ✗ |
| ○ | ✓ | ✗ | ✗ | ✗ |
| ✓ | ✓ | ○ | ✓ | ✓ |

✓ = Specially suited ○ = Possible ✗ = Not suitable



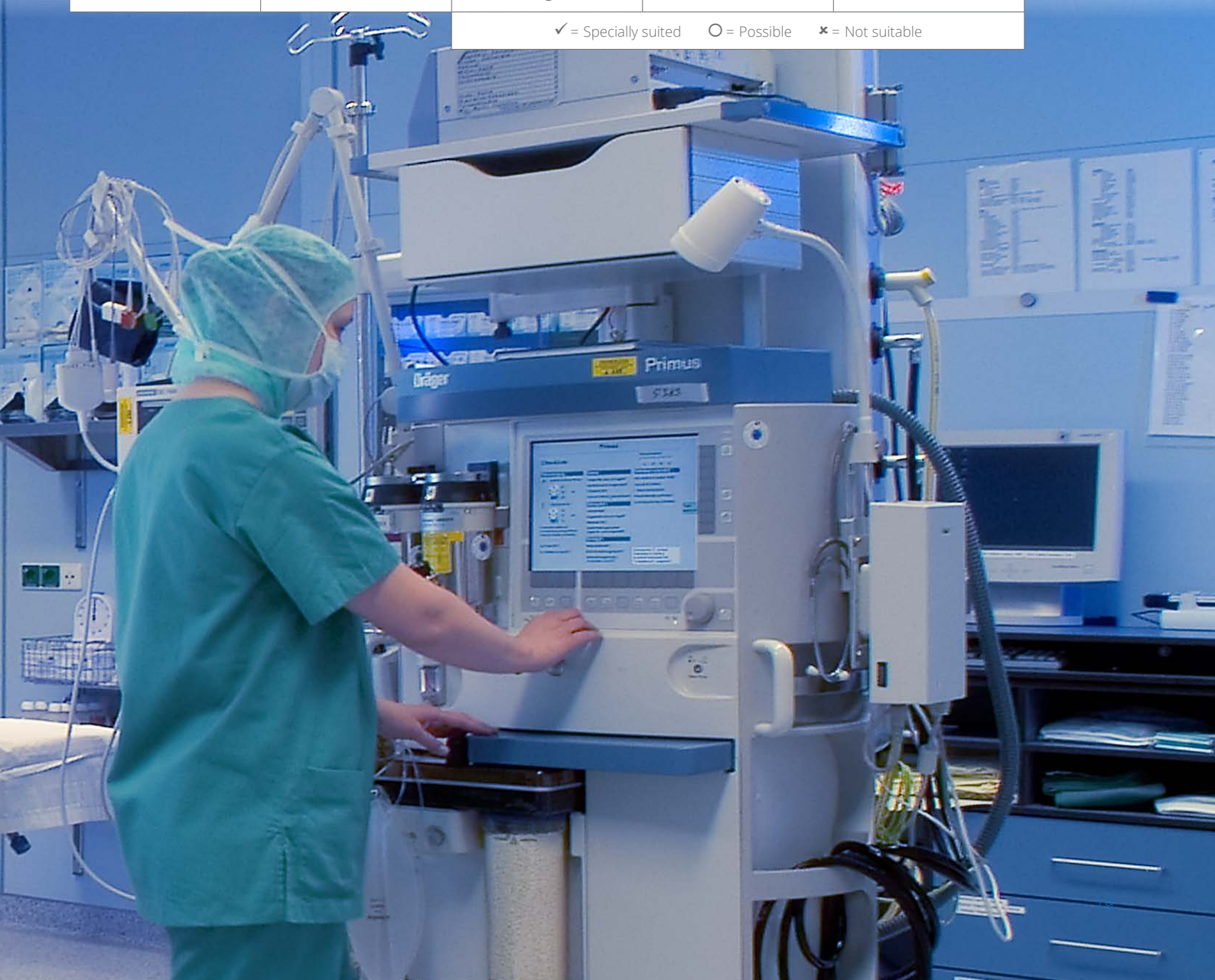
Indications

| | TWISTA SP 1070 | ATMOS Record 55 | ATMOS S 351 OT |
|------------------------------------|----------------|-----------------|----------------|
| Surgical suction | ✓ | ✓ | ✓ |
| Liposuction | ✓ | ✓ | ✗ |
| Aesthetic surgery | ✓ | ✓ | ○ |
| Midwifery | ✗ | ✗ | ✗ |
| Gastroenterology | ✓ | ✓ | ✓ |
| Endoscopy | ○ | ○ | ○ |
| Ophthalmology | ○ | ○ | ✓ |
| Dermatology | ○ | ✓ | ✗ |
| Heart, thorax and vascular surgery | ✓ | ✓ | ✓ |
| Neurosurgery | ✓ | ✓ | ✓ |



| BORA UP 2080 (OP) | ATMOS C 451 | ATMOS C 361 | VENTA SP 26 N | VENTA SP 26 A |
|-------------------|-------------|-------------|---------------|---------------|
| ✓ | ✓ | ✓ | ○ | ○ |
| ✗ | ✗ | ✗ | ✗ | ✗ |
| ✓ | ✓ | ○ | ✗ | ✗ |
| ✓ | ✓ | ✗ | ✗ | ✗ |
| ✓ | ✓ | ✓ | ✗ | ✗ |
| ✓ | ✓ | ✓ | ✓ | ✓ |
| ✓ | ✓ | ✓ | ○ | ○ |
| ✓ | ✓ | ✓ | ○ | ○ |
| ✓ | ✓ | ✓ | ✗ | ✗ |
| ✓ | ✓ | ○ | ✗ | ✗ |

✓ = Specially suited ○ = Possible ✗ = Not suitable



Overview

| | TWISTA SP 1070 | ATMOS Record 55 | ATMOS S 351 OT |
|--|--|--|--|
| Max. suction capacity | 58 +/- 6 l/min (50 Hz) 68 +/- 7 l/min (60 Hz) | 55 +/- 3 l/min | 36 +/- 2 l/min |
| Max. vacuum at sea level | -90 kPa -900 mbar -675 mmHg | -98 kPa -980 mbar -735 mmHg | -90 kPa -900 mbar -675 mmHg |
| Vacuum adjustment | Infinitely variable | Infinitely variable | Stages: -5 kPa, -50 mbar, -37.5 mmHg |
| Operating mode | Continuous operation | Continuous operation | Continuous operation |
| Voltage | 230 V~, 50/60 Hz | 230 V~, 50/60 Hz | 230 V~, 50/60 Hz |
| Special voltage | 127 V~ 60 Hz | 100 V~ 60 Hz 115 V~ 60 Hz 127 V~, 50/60 Hz | 115 V~ 60 Hz 127 V~, 50/60 Hz |
| Dimensions (H x W x D) ▪ With trolley | 1,000 x 560 x 500 mm | 940 x 500 x 390 mm | 300 x 330 x 200 mm 840 x 490 x 520 mm |
| Weight ▪ With trolley | Approx. 26 kg - | 24 kg - | 10.2 kg 24.7 kg |
| Noise level | 53 dB (A) | 46 dB (A) free flow 39 dB (A) final vacuum | 43.9 dB (A) |
| Mobility ▪ Carrying ▪ Pushing ▪ Mounting on device rail ▪ Ceiling-mounting platform | - ✓ - - | - ✓ - - | ✓ ✓ (With trolley) - - |
| Trolley | ✓ | ✓ | Optional |
| Device support | - | - | - |
| Secretion canister | Reusable (up to 5 l) Disposable (up to 3 l) | Reusable (up to 5 l) Disposable (up to 3 l) | Reusable (up to 5 l) Disposable (up to 3 l) |
| Secretion canisters: max. no. and size | 4 x 3 l or 3 x 5 l | 4 x 3 l or 2 x 5 l | Carry version: 1 x 1.5 l Trolley version: 2 x 5 l |
| Foot switch | ✓ | Optional | - |
| Foot controller | - | Optional | Optional |
| Level sensor | - | - | ✓ |
| Automatic start/stop | - | - | ✓ |
| Suction nozzle contact sensor | - | - | ✓ |
| Intermittent suction function | - | - | ✓ |

| BORA UP 2080 (OP) | ATMOS C 451 | ATMOS C 361 | VENTA SP 26 N | VENTA SP 26 A |
|--|--|--|--|--|
| Approx. 42 l/min | 45 +3/-5 l/min | 36 +/- 4 l/min | 26 +/- 3 l/min | 26 +/- 3 l/min |
| -90 kPa -900 mbar -675 mmHg | -91 kPa -910 mbar -683 mmHg | -91 kPa -910 mbar -683 mmHg | -80 kPa -800 mbar -600 mmHg | -80 kPa -800 mbar -600 mmHg |
| Infinitely variable | Infinitely variable | Infinitely variable | Infinitely variable | Infinitely variable |
| Continuous operation | Continuous operation | Continuous operation | Continuous operation | Continuous operation |
| 230 V~, 50/60 Hz | 230 V~, 50/60 Hz | 230 V~, 50/60 Hz | 230 V~ 50 Hz | 100 - 240 V~, 50/60 Hz, lithium-ion battery |
| 115 V~ 60 Hz | - | - | - | - |
| 310 x 360 x 310 mm 1,180 x 550 x 570 mm | 330 x 240 x 360 mm 1,010 x 360 x 440 mm | 330 x 240 x 360 mm 900 x 410 x 450 mm | 275 x 275 x 160 mm 1,045 x 550 x 570 mm | 275 x 275 x 160 mm 1,045 x 550 x 570 mm |
| Approx. 11 kg Approx. 21 kg | 6.7 kg 14.3 kg | 6.3 kg 10.5 kg | 3.7 kg Approx. 13.3 kg | 4.0 kg Approx. 13.6 kg |
| 50.5 dB (A) | ≤ 48 dB (A) | < 50 dB (A) | 50 dB (A) | 50 dB (A) |
| ✓ ✓ (With trolley) ✓ ✓ | ✓ ✓ (With trolley) ✓ (With device support) | ✓ ✓ (With trolley) ✓ (With device support) | ✓ ✓ (With trolley) ✓ (With device support) | ✓ ✓ (With trolley) ✓ (With device support) |
| Optional | Optional | Optional | Optional | Optional |
| ✓ | Optional | Optional | Optional | Optional |
| Reusable (up to 5 l) Disposable (up to 3 l) | Reusable (up to 5 l) Disposable (up to 3 l) | Reusable (up to 5 l) Disposable (up to 3 l) | Reusable (up to 5 l) Disposable (up to 3 l) | Reusable (up to 5 l) Disposable (up to 3 l) |
| Carry version: 1 x 2 l Trolley version: 4 x 5 l | Carry version: 1 x 3 l Trolley version: 2 x 5 l | Carry version: 1 x 3 l Trolley version: 2 x 3 l | Carry version: 1 x 1 l Trolley version: 2 x 5 l | Carry version: 1 x 1 l Trolley version: 2 x 5 l |
| ✓ (Operation version) | Optional | - | - | - |
| - | Optional | - | - | - |
| - | - | - | - | - |
| - | - | - | - | - |
| - | - | - | - | - |
| - | - | - | - | - |



Vacuum Extraction



Surgical Suction



Wound Drainage

ATMOS



Cardiothoracic Drainage



Oxygen Supply



Bronchial Suction



Smoke Evacuation



Mobile Oxygen Supply

Product Range



Suction with CGS

***For more information on
the entire "ATMOS Medical
Suction Systems" product
range, visit:***

www.atmos-medap.com



MedizinTechnik

ATMOS MedizinTechnik GmbH & Co. KG
Ludwig-Kegel-Str. 16
79853 Lenzkirch / Germany
Tel: +49 7653 689-0
atmos@atmosmed.de

For more information on the
entire "ATMOS surgical suction"
product range, visit:
www.atmos-medap.com

www.atmosmed.com