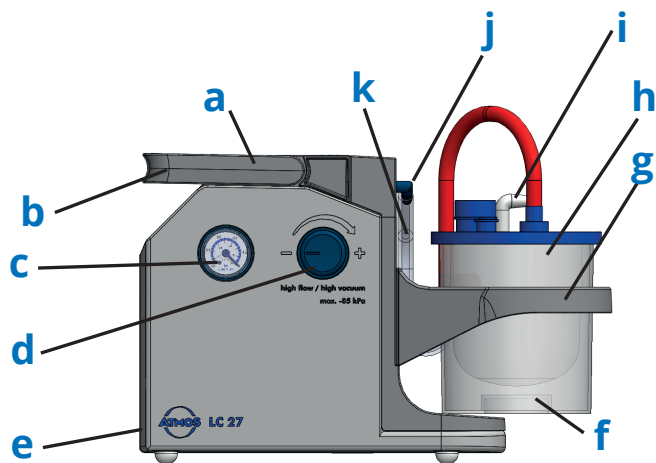


ATMOS LC 27 / Medi-Vac® | ATMOS LC 27 Battery / Medi-Vac®



- a** Bedienfeld / Control panel / Commandes / Panel de control
- b** Tragegriff / Handle / Poignée de transport / Asa
- c** Manometer / Vacuum gauge / Manomètre / Manómetro
- d** Vakuumregulierung / Vacuum regulation / Réglage de la dépression / Regulador de vacío
- e** Anschluss für Steckernetzteil / Connection for power supply unit / Connexion pour alimentation / Conexión a red
- f** Medi-Vac®-Außenbehälter / Medi-Vac® external canister / Bocal extérieur Medi-Vac® / Contenedor exterior Medi-Vac®
- g** Halterung für Medi-Vac®-Außenbehälter / Support for Medi-Vac® canister system / Support pour système de recueil Medi-Vac® / Soporte para el sistema de contenedores Medi-Vac®
- h** Medi-Vac®-Absaugbeutel / Medi-Vac® suction bag / Poche d'aspiration Medi-Vac® / Bolsa de aspiración Medi-Vac®
- i** Winkel (Anschluss Einmal-Absaugschlauch) / Angle (connection disposable suction hose) / Raccord coudé (Connexion tubulaire à usage unique) / Conexión angulada para tubo de aspiración desechable
- j** Bakterienfilterkartusche Einwegsystem / Bacterial filter cartridge disposable system / Cartouche de filtre antibactérien pour système à usage unique / Cartucho filtro bacteriano para sistema desechable
- k** Vakuumverbindungsschlauch / Vacuum hose / Tubulure de raccordement / Tubo de vacío



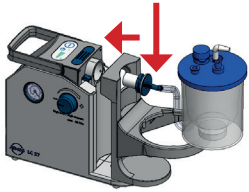
Beachten Sie die Gebrauchsanweisung!  
Please note the operating instructions!  
Respectez les instructions d'utilisation !  
Preste atención al Manual de Instrucciones!



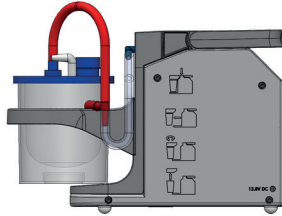
Diese Anleitung ersetzt nicht die Gebrauchsanweisung!  
This card does not replace the operating instructions!  
Ce manuel ne remplace pas le mode d'emploi !  
Esta guía no sustituye el Manual de Instrucciones!

# Vor der Absaugung | Before suction | Avant l'aspiration | Antes de la succión

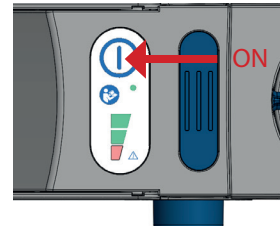
1



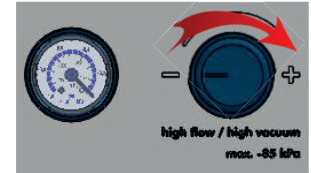
2



3

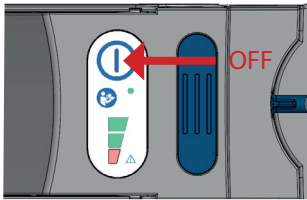


4

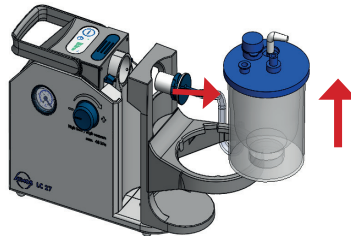


# Nach der Absaugung | After suction | Après l'aspiration | Después de la succión

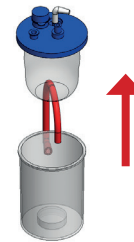
5



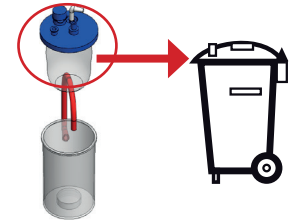
6



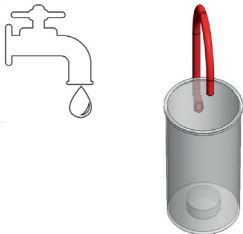
7



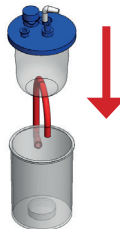
8



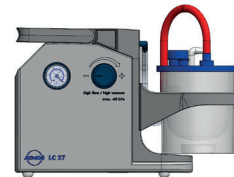
9



10



11



ATMOS MedizinTechnik  
GmbH & Co. KG  
Ludwig-Kegel-Str. 16  
79853 Lenzkirch  
Germany

+49 7653 689-0  
info@atmosmed.de