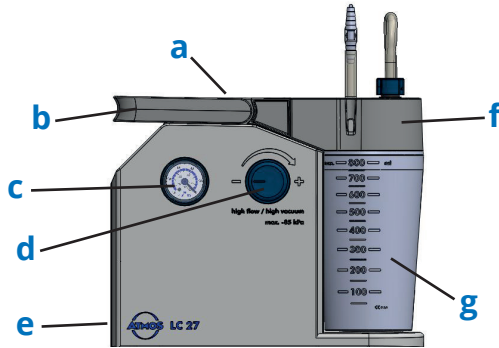


Kurzanleitung | Quick Guide | Guide rapide

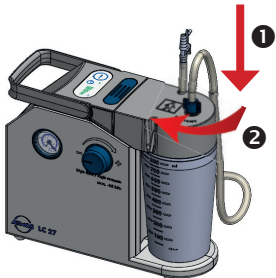
ATMOS LC 27 | ATMOS LC 27 Battery

Vor der Absaugung | Before suction | Avant l'aspiration

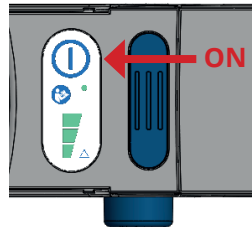


- a** Bedienfeld / Control panel / Commandes
- b** Tragegriff / Handle / Poignée de transport
- c** Manometer / Vacuum gauge / Manomètre
- d** Vakuumregulierung / Vacuum regulation / Réglage de la dépression
- e** Anschluss für Steckernetzteil / Connection for power supply unit / Connexion pour alimentation
- f** Einpatienten-Sekrebehälterdeckel / Single patient secretion canister lid / Couvercle pour bocal à sécrétions à patient unique
- g** Einpatienten-Sekretbehälter / Single patient secretion canister / Bocal à sécrétions à patient unique

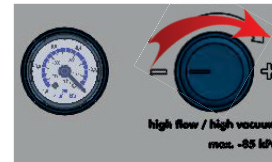
1



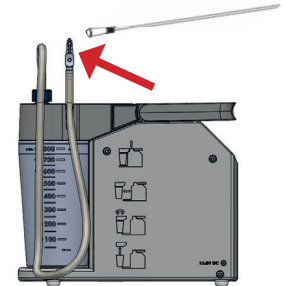
2



3



4



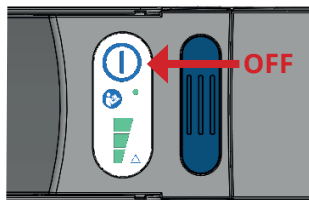
Diese Anleitung ersetzt nicht die Gebrauchsanweisung!
This card does not replace the operating instructions!
Ce manuel ne remplace pas le mode d'emploi !



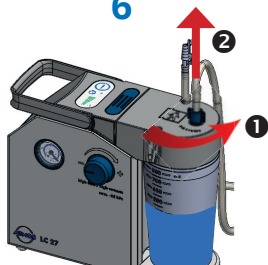
Beachten Sie die Gebrauchsanweisung!
Please note the operating instructions!
Respectez les instructions d'utilisation !

Nach der Absaugung | After suction | Après l'aspiration

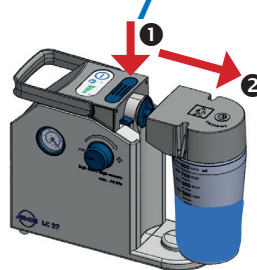
5



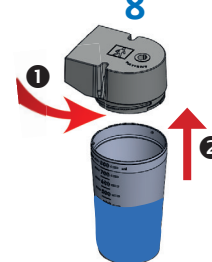
6



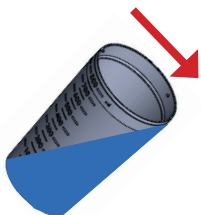
7



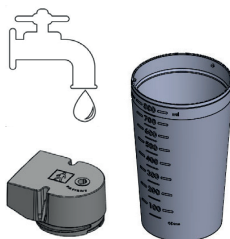
8



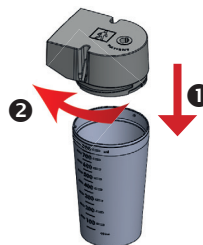
9



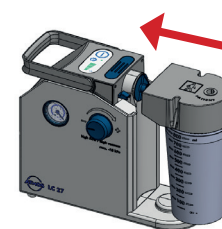
10



11



12



13



ATMOS MedizinTechnik
GmbH & Co. KG
Ludwig-Kegel-Str. 16
79853 Lenzkirch
Germany

CE 0124

+49 7653 689-0
info@atmosmed.de