



ATMOS S 351 NATAL

The smart universal suction device for gynaecology and obstetrics

*Exactly
what
I need*

S 351 NATAL

Smart, versatile & reliable

The unique device concept of the ATMOS S 351 NATAL is unrivalled on the market. No other device has the ability to automatically build up and reduce vacuum according to the set time. The use of a foot controller is therefore obsolete in automatic mode, but it can still be used as usual in classic mode. At the same time, sensor-monitored vacuum enables precise monitoring of the procedure thanks to a target/current vacuum display. This function not only provides added control, but also alerts the user immediately if the vacuum drops unexpectedly – for example, if the extraction cup becomes detached.

The ATMOS S 351 NATAL also offers versatile application possibilities in surgical suction, such as for suction curettage or suction biopsy, as well as for bronchial suctioning in newborns.



Maximum safety

THANKS TO SOPHISTICATED TECHNOLOGY

- various bacterial filters, overflow protection, and secretion canister systems for individual configuration
- simple handling and system monitoring for optimum results

Digital support

THANKS TO SMART SOFTWARE AND SENSOR SYSTEM

- optimised noise level without loss of performance
- two modes (SEMI and AUTO) for increased safety and easier use
- precise vacuum regulation and complete control over the final vacuum
- fill-level detection in the secretion canister

Universal use


THANKS TO THE INTUITIVE DEVICE CONCEPT

- various application possibilities: vacuum extraction, surgical suction (among others: suction curettage, suction biopsy), bronchial suctioning in newborns
- mobility: portable and mobile on a trolley or multifunctional trolley

Areas of application:

 Delivery room

 Doctor's practice

 Gynaecological outpatient clinic

 OR

Functions & attachment options

Possibilities? Numerous.

With the ATMOS S 351 NATAL, ATMOS offers a safe and effective solution for vacuum extraction to make the delivery process as smooth as possible for everyone involved. The innovative technology and simple use of the ATMOS S 351 NATAL enable medical staff to achieve the best for both mother and child. The hydrophobic bacterial and viral filter provides additional protection against oversuction and not only ensures the device's longevity, but also prevents any suctioned bacteria or viruses from entering the device. This also reduces the risk of the ambient air being contaminated by the device.

The illustration shows different attachment options. Text indentations make it clear how the articles and the types of attachment are dependent on each other. For example, to attach an item listed on an indented line, you need the article shown on the next higher level.

NUMEROUS ATTACHMENT OPTIONS (LEFT/RIGHT POSSIBLE)

- Secretion canister lid incl. standard rail holder – REF 444.0015.0
 - Double socket nipple with overflow electrode – REF 444.0012.0
 - Secretion canister 1.5 l (PC) – REF 444.0100.0
- Support for Serres®-external canister 1 l – REF 313.0413.0
 - ATMOS-External Canister 1 l – REF 401.0100.0
 - ATMOS-Suction Bag 1 l, 100 pcs. – REF 401.0102.0
 - ATMOS-Suction Bag 1 l with Gelling Agent, 100 pcs. REF 401.0101.0
 - Septic fluid jar 1 l PSU with equipment mount – REF HM57525431
 - Septic fluid jar cap – REF HM57525432
 - Adapter – REF HM57522295
- Hose bracket, for attaching to standard rail – REF 444.0450.0

SENSOR-MONITORED VACUUM

- Hydrophobic bacterial filter with filter change indicator and electronic fill-level detection (only possible in combination with REF 444.0015.0 and REF 444.0012.0)

Maximum safety

PROTECTION OF AMBIENT AIR AND DEVICE

- Hydrophobic bacterial and viral filter, Ø 11 mm – REF 443.0738.0
- Smoke evacuation filter – REF HM57524928

INTERFACE FOR SAFETY CANISTER

- Safety canister 250 ml (with bacterial filter) REF 444.0646.1
- Safety canister 250 ml (without bacterial filter) REF 444.0646.0

HIGH-RESOLUTION COLOUR DISPLAY

- Display of target and current vacuum values as well as the remaining time for vacuum build-up and reduction

CONNECTIONS ON THE REAR SIDE OF THE DEVICE

- Foot control for ATMOS S 351 – REF 444.0478.0
- Equipotential bonding cable – REF HM57503474

MICROPROCESSOR-CONTROLLED AGGREGATE

- For maximum performance with minimal noise

GREATER SAFETY IN USE

- Preselectable vacuum parameters, time settings for vacuum build-up and reduction as well as automatic functions



Operating concept

User support? Of course.

When performing vacuum-assisted delivery, the user must concentrate on carrying out the procedure correctly and must not be distracted by operating the device. With this in mind, the ATMOS S 351 NATAL combines a number of digital features that make operation of the device and treatment of the patient noticeably safer and more convenient for the user.

QUIET IN THE DELIVERY ROOM

The microprocessor-controlled pump in the ATMOS S 351 NATAL ensures maximum performance and minimum noise. The low noise level provides a pleasant atmosphere for the expectant parents, improved concentration for users, and better communication in the delivery room.

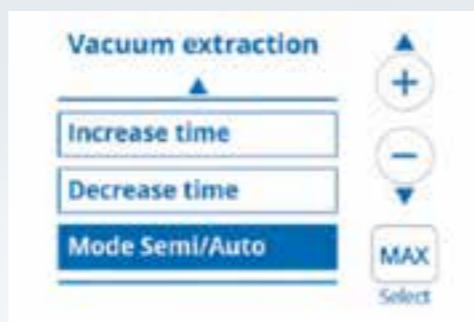


GREATER SAFETY IN USE

Preselectable vacuum parameters, time settings for vacuum build-up and vacuum reduction as well as two vacuum extraction modes (SEMI and AUTO) provide optimal support to the user when operating the device. In SEMI mode, the device initially builds up a vacuum of -20 kPa, holds it so that the user can take the time to check the position of the extraction cup, and then builds up the final vacuum only after the user has confirmed this manually. In AUTO mode, the vacuum continues to build up automatically after a short pause at -20 kPa. Preset parameters can always be adjusted during use if necessary. For example, the increase/decrease times can be shortened or extended.

Alternatively, a foot controller can be connected to control the vacuum.

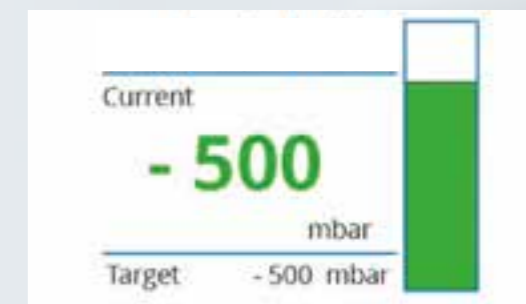
Manual vacuum control directly on the device is also possible.



FOCUS ON WHAT REALLY MATTERS

Sensor-monitored vacuum with acoustic and visual warning messages, a colour display with all relevant information as well as the hydrophobic bacterial and viral filter with filter change indicator ensure maximum safety and extremely easy handling at the same time.

Thanks to the sensor-monitored vacuum, the device detects a drop in negative pressure, which could indicate a leak or an incorrectly fitted or detached extraction cup. Among other things, this can reduce the risk of an extraction cup detachment with serious consequences.



Digital support



Multifunctional

One device for all situations? Universal suction device.

The universal suction device ATMOS S 351 NATAL has the advantage that it can be used for various applications. Vacuum extraction, surgical suction, such as suction curettage and suction biopsies, as well as bronchial suction in newborns can be carried out with this device. This makes it possible to use it efficiently and seamlessly for various medical applications without the need for cumbersome and time-consuming device changes. Numerous accessories are also available so that the device can be configured according to individual needs (see also pages 11–12).

TROLLEY

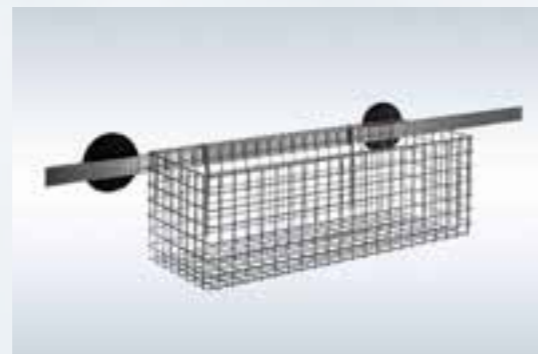
The trolley (REF 320.0070.0) with its standard rail offers a variety of attachment options. The stainless steel basket (REF HM57508022) in particular is a popular solution for storing various other accessories.



BASKET

The stainless steel basket (REF HM57508022) offers the option of conveniently storing numerous accessories on the trolley (REF 320.0070.0). This means that the foot controller (REF 444.0478.0), power cable, and other components are ready to hand for the next application and can then be quickly stowed away and moved again.

Dimensions (H x W x D): approx. 150 x 470 x 180 mm



Universal use

ATMOS EXTRACTION CUP (MALMSTRÖM)

The ATMOS Extraction Cup (Malmström) made of autoclavable stainless steel is available in three different diameters (40, 50, and 60 mm). The cup is characterised in particular by its secure hold on the baby's head. The design reduces the risk of the extraction cup becoming detached and enables a stronger pull during vacuum-assisted delivery.



ATMOS CUPS

The ATMOS Cups made of medical silicone are also autoclavable and available in two sizes (50 and 60 mm). They were designed with user-friendliness in mind. Silicone cups offer the advantage of being more flexible and easier to handle.



SUCTION CURETTES

Autoclavable suction curettes in various sizes (3, 6, 8, 12, 14 mm) can be used for suction curettage.

Use the connection adapter for curettes, Ø 11 mm (REF 401.0553.0) to ensure a safe and quick change of curettes during the procedure. We recommend using one of our Ø 10 mm silicone hoses for connecting the curettes.



DEVICE VERSIONS

	Article number
ATMOS S 351 NATAL, 230 V	444.0491.0
ATMOS S 351 NATAL – basic set, 230 V	444.0490.0
ATMOS S 351 NATAL – basic set, 230 V (Medi-Vac®)	444.0492.0
ATMOS S 351 NATAL – basic set, 230 V (Serres®)	444.0493.0
ATMOS S 351 NATAL mobile, 230 V	444.0481.0
ATMOS S 351 NATAL mobile with foot control, 230 V	444.0482.0

You can find more information regarding our scope of delivery in our online shop: atmosmed.shop

ACCESSORIES



ATMOS Disposable Suction System	Article number
ATMOS-External Canister 1 l	401.0100.0
ATMOS-Suction Bag 1 l with Gelling Agent, 100 pcs.	401.0101.0
ATMOS-Suction Bag 1 l, 100 pcs.	401.0102.0
Gelling Agent for ATMOS-Suction Bags, 100 pcs.	401.0090.0

Other disposable suction systems available on the market can be used with the ATMOS S 351 NATAL.



Canisters and lids	Article number
Secretion canister lid incl. standard rail holder	444.0015.0
Double socket nipple with overflow electrode	444.0012.0
Secretion canister 1.5 l (PC)	444.0100.0
Septic fluid jar 1 l PSU with equipment mount	HM57525431
Septic fluid jar cap	HM57525432
Tube connector: Adapter	HM57522295



Supports and baskets	Article number
Stand rail clamp Serres®, ATMOS S 351 For various items with equipment mount	444.0484.0 (e.g.: 401.0100.0)
Hose bracket, for attaching to standard rail	444.0450.0
Basket (H x W x D: 150 x 470 x 180 mm) For trolleys	HM57508022 320.0070.0



Filter and overflow protection	Article number
Hydrophobic bacterial and viral filter, Ø 11 mm	443.0738.0
Safety canister 250 ml (without bacterial filter)	444.0646.0

The optional safety canister is an additional overflow protection that prevents oversuction of the device. However, it is not a substitute for the hydrophobic bacterial and viral filter (REF 443.0738.0).



Hoses	Article number
Suction hose, PVC, Ø 5.5 mm, L = 2.10 m, 50 pcs. Sterile item (disposable)	006.0059.0
Suction hose, silicone, Ø 10 mm, 1 m (minimum 5 m)*	006.0026.0
Suction hose, silicone, Ø 10 mm, L = 1.3 m, 1 pc.*	318.1012.0
Suction hose, silicone, Ø 10 mm, L = 2 m, 1 pc.*	000.0243.0
Suction hose, silicone, Ø 6 mm, 1 m (minimum 5 m)*	006.0009.0
Suction hose, silicone, Ø 6 mm, L = 1.3 m, 1 pc.*	000.0013.0
Suction hose, silicone, Ø 6 mm, L = 2 m, 1 pc.*	000.0361.0
Hose connector (from Ø 10 mm to Ø 6 mm)	000.0239.0
Extraction hose, green, Ø 6 mm (minimum 5 m)*	006.0010.0
Extraction hose, green, Ø 6 mm, L = 1.5 m*	404.0146.0

*All silicone/extraction hoses are autoclavable up to 134 °C.



Catheters, currettes, and extraction cups	Article number
Suction catheter, CH 12, 100 pcs.	000.0294.0
Suction catheter, CH 14, 100 pcs.	000.0295.0
Suction catheter, CH 16, 100 pcs.	000.0296.0
Adapter for currettes, Ø 11 mm	401.0553.0
Suction curette, for test taking, Ø 4 mm	401.0528.0
Suction curette, with auxiliary air vent, Ø 6 mm	401.0529.0
Suction curette, with auxiliary air vent, Ø 8 mm	401.0530.0
Suction curette, with auxiliary air vent, Ø 12 mm	401.0532.0
Suction curette, with auxiliary air vent, Ø 14 mm	401.0533.0
Suction curette, for test taking, Ø 3 mm	401.0554.0
Extraction cup, malmstroem, Ø 40 mm	404.0155.0
Extraction cup, malmstroem, Ø 50 mm	404.0156.0
Extraction cup, malmstroem, Ø 60 mm	404.0157.0
ATMOS-Cup, extraction cup silicone, Ø 60 mm	404.0193.0
ATMOS-Cup, extraction cup silicone, Ø 50 mm	404.0194.0



Device controllers	Article number
Foot control for ATMOS S 351	444.0478.0



Cables	Article number
Equipotential bonding cable	HM57503474

TECHNICAL DATA



Suction capacity	36 l/min
Max. vacuum	-90 kPa; -900 mbar
Noise level	< 54 dB(A)
Dimensions	without trolley: 30 x 33 x 20 cm; with trolley: 88 x 48 x 44 cm
Weight	10.2 kg (without secretion canister and without trolley)
Voltage	230 V, 50/60 Hz
Mode of operation	Vacuum extraction (SEMI and AUTO) and continuous (continuous operation)

ATMOS Online Shop

You can find more information and images regarding our products, the scope of delivery, and all accessories in our online shop.
atmosmed.shop/en



ATMOS MedizinTechnik GmbH & Co. KG

Ludwig-Kegel-Str. 16
79853 Lenzkirch / Germany

Phone +49 (0)7653-689-0
Fax +49 (0)7653-689-190
E-mail info@atmosmed.com

www.atmosmed.com



Scan the QR code to go to the ATMOS S 351 NATAL web page.